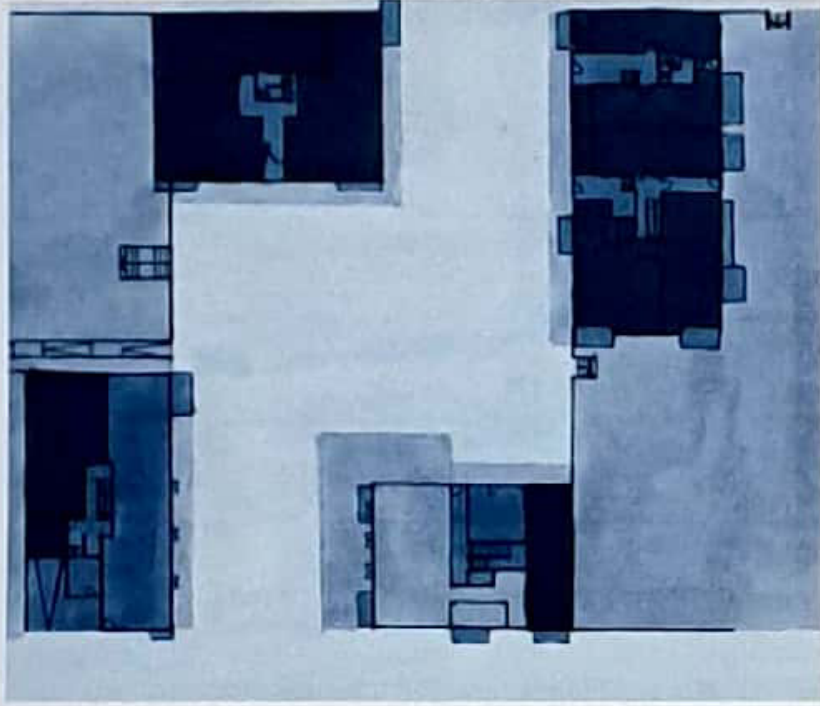


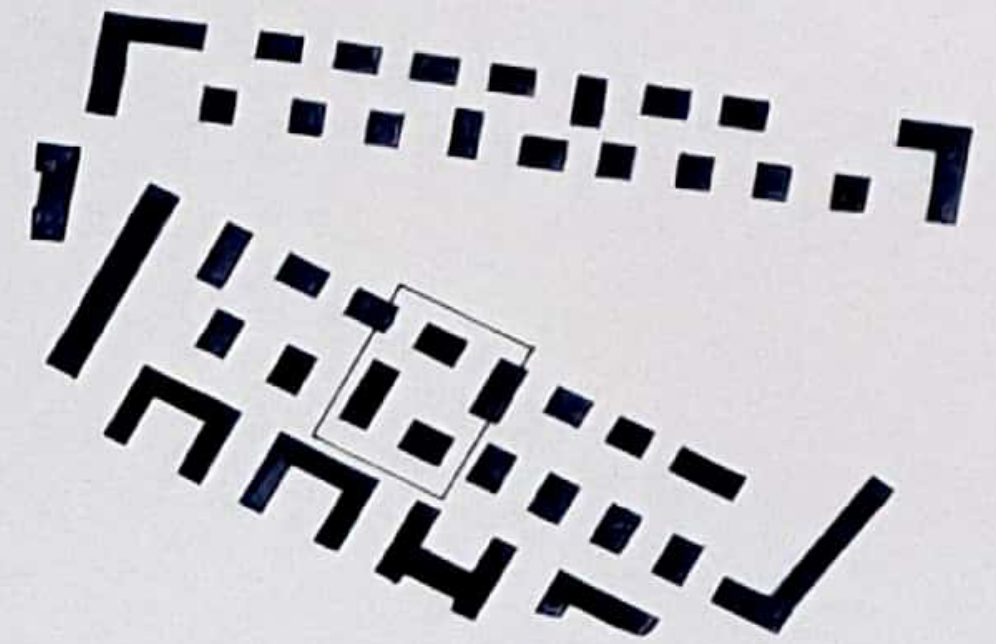
# STADTPLATZ MÜNCHEN

## NUTZUNG

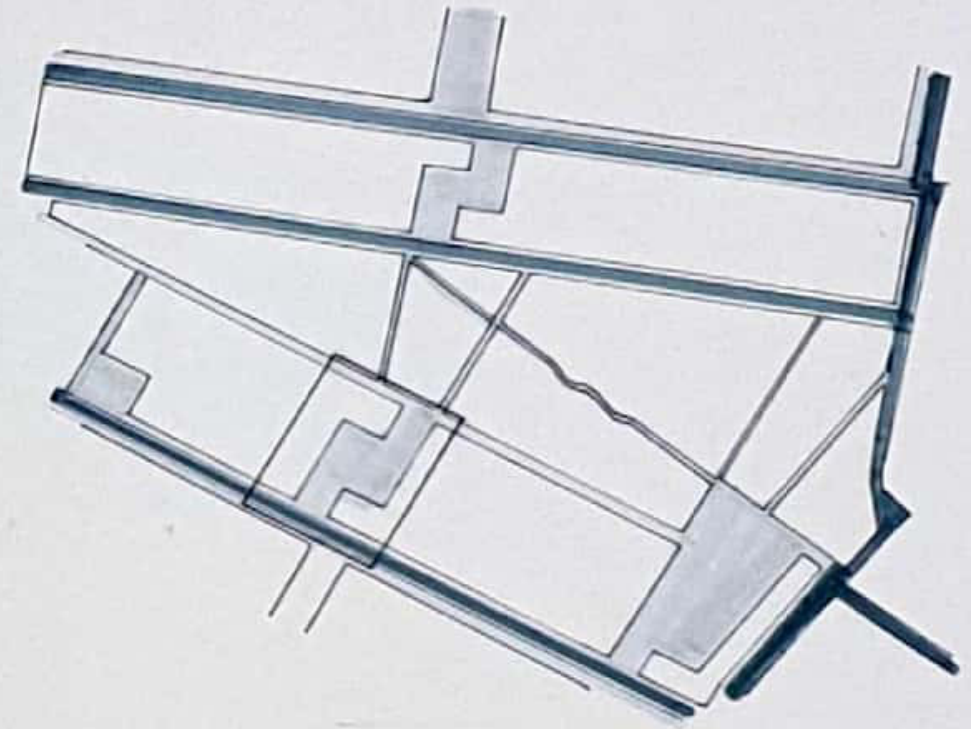


ÖFFENTLICH  
HALBÖFFENTLICH  
HALBPRIVAT  
PRIVAT

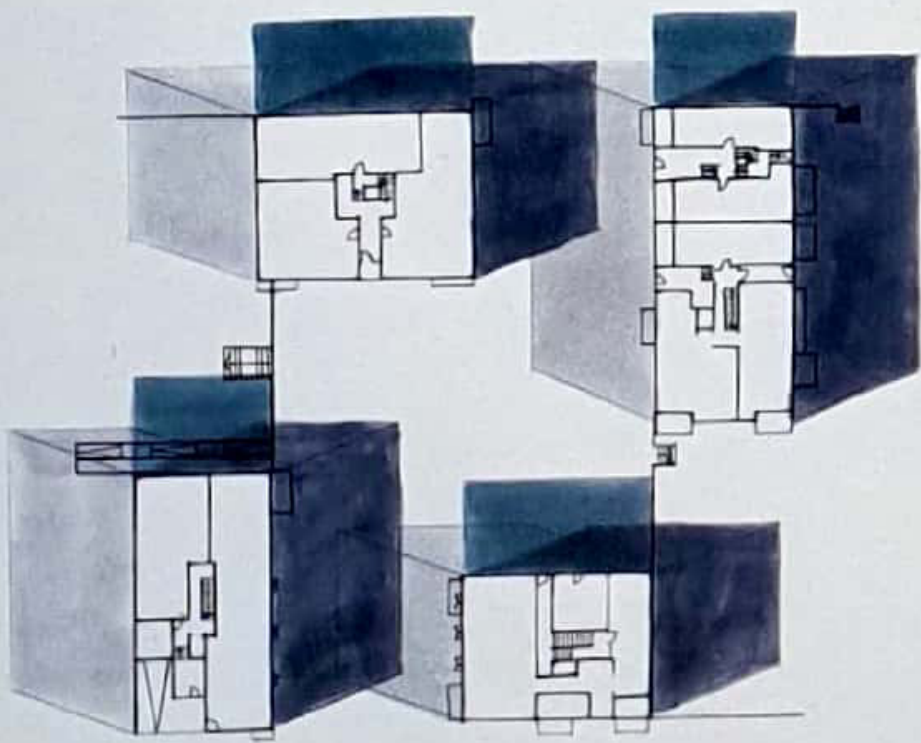
## SCHWARZPLAN



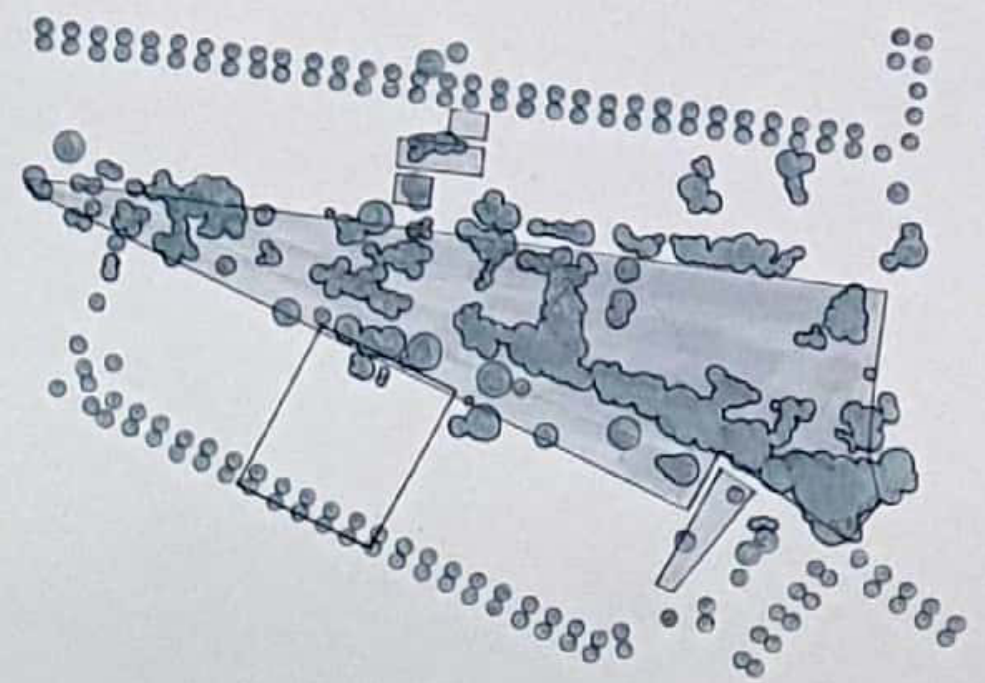
## ERSCHLIESSUNG



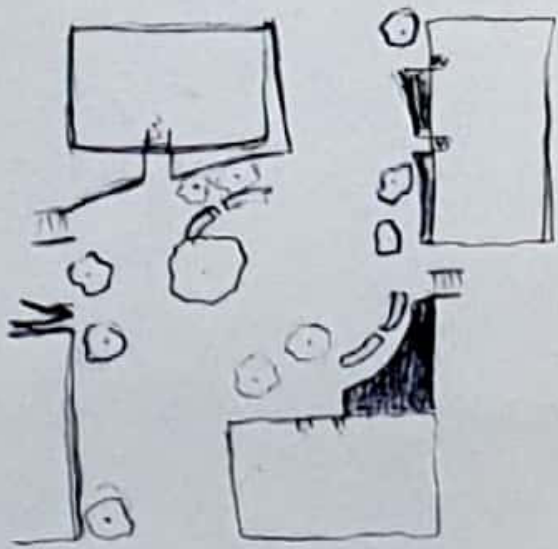
## SCHATTEN MORGENS, MITTAGS, ABENDS



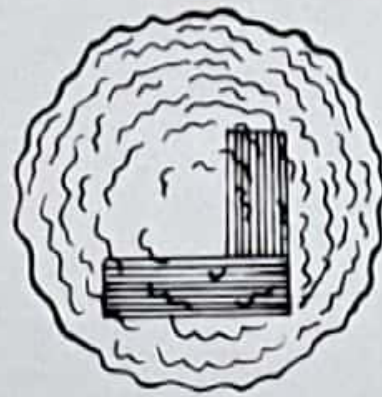
## GRÜNPLAN



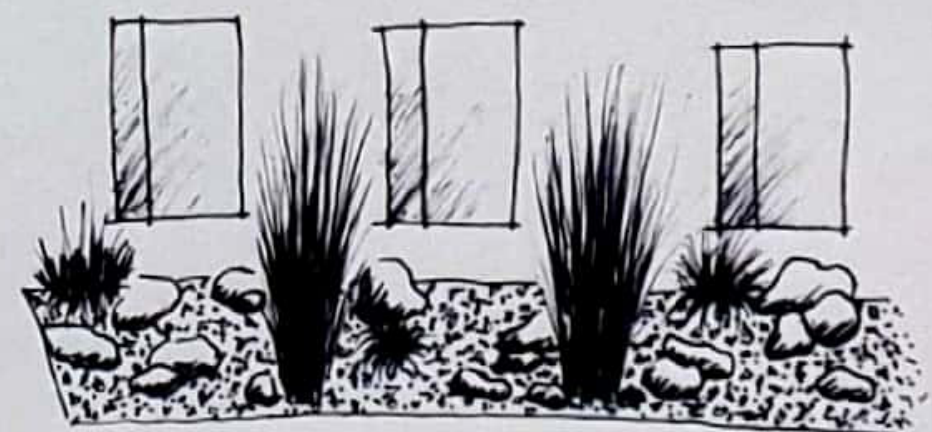
## SKIZZENHAFTES ENTWURFSKONZEPT



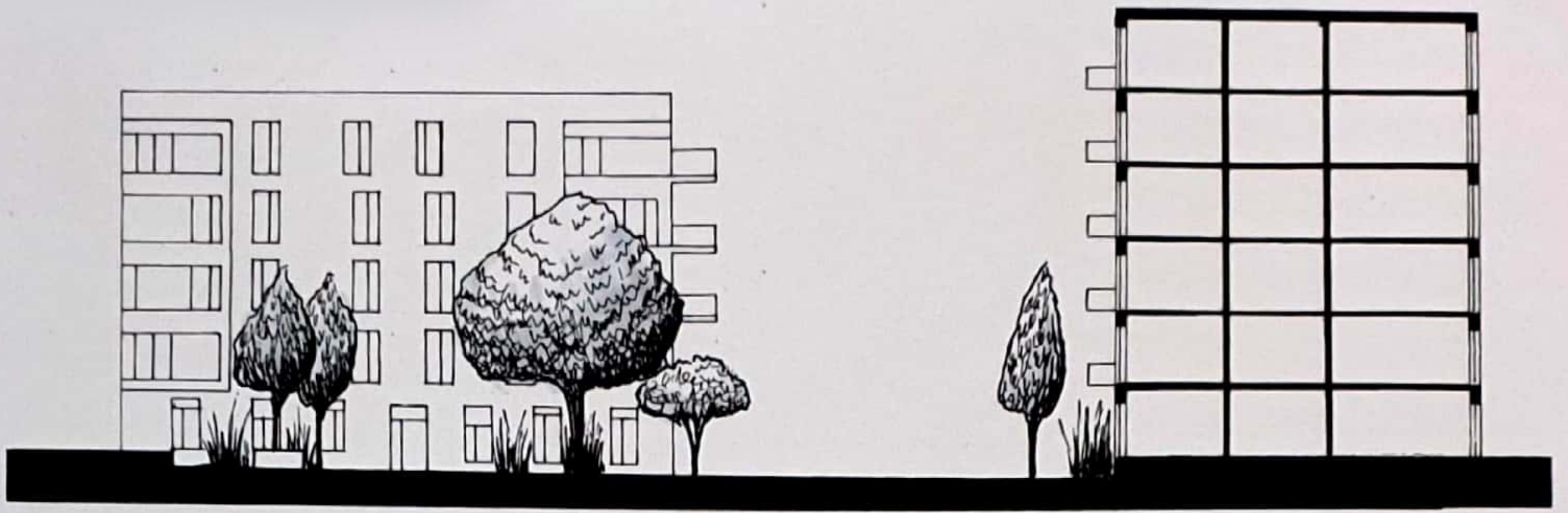
## DETAIL 1:100



## SKIZZE







Schnitt A-A' M 1:200

ENTWURFSGRUNDRISS

